

**24 HR - ADVANCE PREP**

Cyanotype  
+INFO




2 oz  
60 ml



**5.67g**  
**0.2 oz**

**POTASSIUM  
FERRICYANIDE**

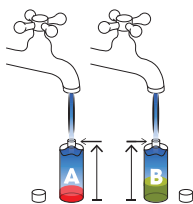
2 oz  
60 ml



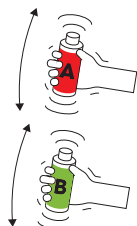
**13.46g**  
**0.47oz**

**FERRIC  
AMMONIUM  
CITRATE**

**1** Fill to top with water.



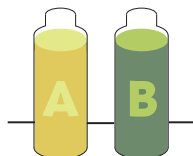
**2** Shake Well.



**3** Allow 24 hours to fully dissolve.



**4** Stock solutions A and B are stable for at least 6 months - 1 year.

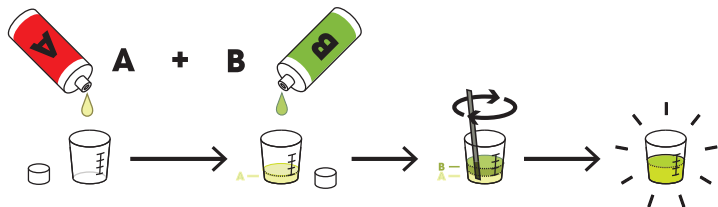


**5 HOW TO MIX**



Create the  
**Cyanotype Sensitizer**  
by mixing equal parts  
**A+B.**

**A : B**  
**1 : 1**

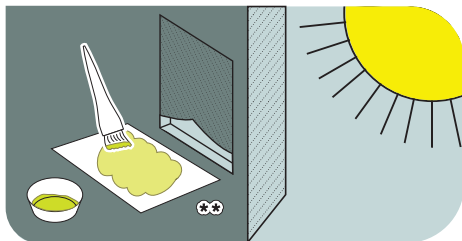


Start by only mixing together a small amount of **Cyanotype Sensitizer**.  
A little goes a long way and it is only stable for several hours once mixed.

**6** Decant the **Cyanotype Sensitizer** into a **\*bowl or other container of your choice that will not be used for food consumption.** \*



**7** In subdued lighting **away** from sunlight use the provided **Hake Brush** to apply a thin coat of **Cyanotype Sensitizer** to the provided paper or a surface of your choosing\*\*: paper, fabric, wood, leather, canvas, etc.



## COATING SURFACES



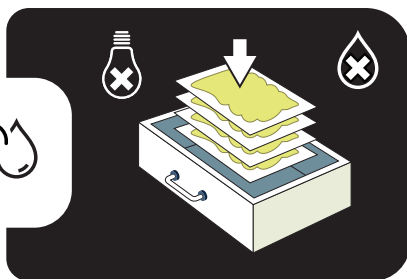
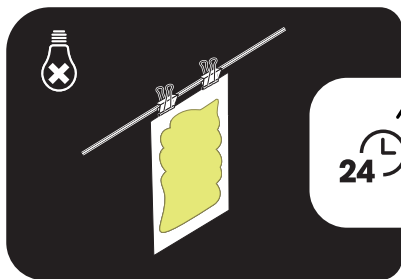
\*\* The **Hahnemuhle Platinum Rag Fine Art Paper** provided is the **best** option for cyanotype.

You can explore limitless options for substrates, such as natural fabrics, wood, canvas, leather, and other porous or semi-porous surfaces.

In general, **non-buffered rag papers** with minimal **external sizing** work best. **Test first** when possible for best results.

**8** Place in a **dark area** and allow **24 hours** to fully dry.

Coated paper **may be stored** for use at a **later date**. Keep in a **dry, dark** place.



## TIME TO PRINT!

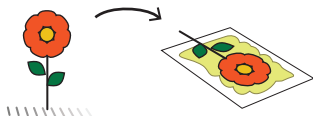
### OPTION

**A**



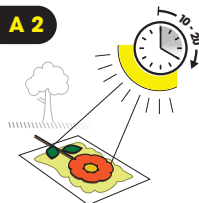
**A 1** Now it's time to curate the **objects** for your print!

Anything that **casts a shadow** is up for consideration!



### OBJECT BASED PRINTS

**A 2**



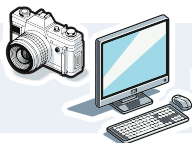
Place objects onto the coated paper, then **expose to sunlight** for **10 - 20** minutes or until the exposed areas of the print turn **bronze**.

**CONTINUED ON STEP**

**A / B / C 1**

## OPTION

### B



## PHOTO PRINTS + DIGITAL ART

#### B 1



To create a **film negative**, first edit your image using software or **our website**, and then use your home printer to print the negative onto the provided **SolarFast Film**.

#### B 2

Make the photo **black and white** and then **invert** it to negative.



#### B 3

### IMPORTANT:

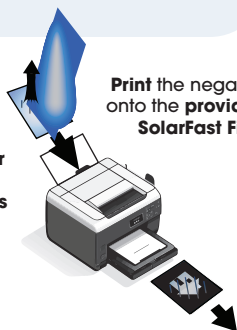
Only **one side** of the film is printable.



**Moisten fingers** and **pinch** a corner of the film - the side that feels **sticky** is the print - side

#### B 4

**CAUTION:** Check your **printer instructions** for **proper page loading instructions**



Print the negative onto the provided **SolarFast Film**.

CONTINUED ON STEP

B \ C 1

## OPTION

### C



## PRINTS FROM DRAWING

#### C 1

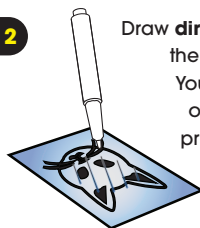
### IMPORTANT:

The film will **only accept ink on one side**. **Pinch** a corner of the film with **moistened fingers** and **only draw** on the side that feels **sticky!**



#### C 2

Draw **directly on the film** using the provided **Film Marker**. You can make an edition of **countless cyanotype prints** from your drawing!

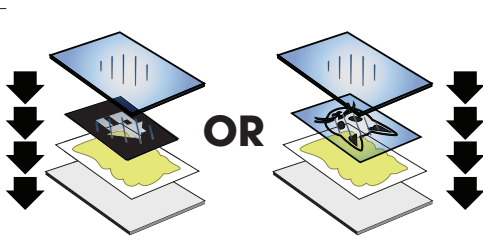


B \ C 1

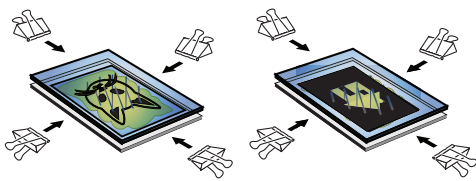


OR

Place the film negative OR **drawing** on top of the coated paper and **sandwich** between the **glass** and **backer board** to keep it rigid and flush.

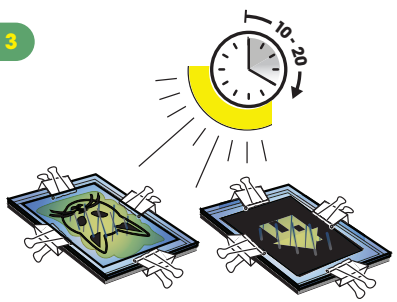


2



Use the **provided clips** to pinch the contact-printing frame tight.

3

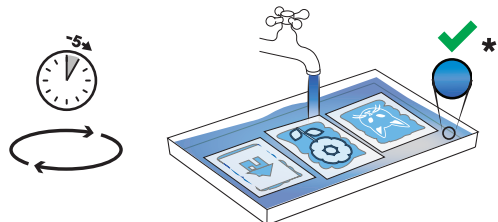


Expose **10 - 20 min.**

A / B / C 1

## RINSING & DRYING YOUR PRINT!

2



**Rinse** the exposed print in water for at least **5 minutes**, changing the water periodically **until it runs clear**.

### OPTIONAL

If you want to **skip** the **24 - 48 hour** wait it is possible to reach the **final tonal depth** instantaneously by **adding a drop of Hydrogen Peroxide** to the final rinse bath. Afterward, rinse one last time.



3

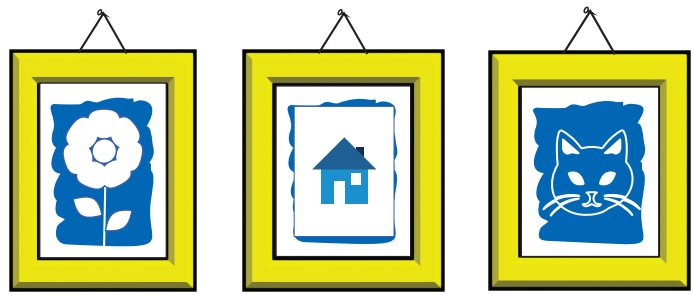
Hang to **dry**.

4

Over **24 - 48 hours** the shade of blue **will continue to deepen** until it reaches its final shade.



5



Enjoy your print!